
Report To: ENVIRONMENT & REGENERATION COMMITTEE **Date:** 3 May 2018

Report By: CORPORATE DIRECTOR, ENVIRONMENT, REGENERATION & RESOURCES **Report No:** LP/019/18

Contact Officer: CAROLINE SHAW **Contact No:** 01475 712115

Subject: PROPOSED TRAFFIC REGULATION ORDER – DISABLED PERSONS’ PARKING PLACES (ON-STREET) ORDER NO. 4 2017

1.0 PURPOSE

- 1.1 Local Authorities are empowered to make Orders under the Road Traffic Regulation Act 1984 as amended and under the Council’s Scheme of Administration the Head of Environmental and Commercial Services is responsible for the making, implementation and review of Traffic Management Orders and Traffic Regulation Orders.
- 1.2 The provision of on-street parking places for use by disabled drivers, who are the holders of a Disabled Person’s Badge, is regulated by The Disabled Persons’ Parking Places (Scotland) Act 2009. Inverclyde Council is required to promote a Traffic Regulation Order to regulate the use of such parking places.

2.0 SUMMARY

- 2.1 In order to comply with The Disabled Persons’ Parking Places (Scotland) Act 2009, Section 5, it is proposed to introduce a Traffic Regulation Order to accompany the provision of parking places for the disabled. This will restrict parking to drivers displaying a Disabled Person’s Badge only and will enable the Police to enforce such restrictions. The proposed Order will also revoke those parking places no longer required in order to maximise street parking capacity.

3.0 RECOMMENDATION

- 3.1 That the Committee recommend to The Inverclyde Council the making of the Traffic Regulation Order – Disabled Persons’ Parking Places (On-Street) Order No. 4 2017 and remit it to the Head of Environmental and Commercial Services and the Head of Legal and Property Services to arrange for its implementation.

Gerard Malone
Head of Legal and Property Services

4.0 BACKGROUND

- 4.1 Currently no Traffic Regulation Orders exist at the locations shown in the Order which would prohibit the allocation of parking places for Disabled Person's Badge holders.
- 4.2 Three written objections were received to this Order. One was outwith the time limit for objections to be lodged; one did not have valid grounds for objection and the other objection to parking space Ref No. 1748 – 4 Alderbrae Road, Port Glasgow has now been uplifted by the objector. There are, therefore, no valid objections to this Order.
- 4.3 The Committee is asked to note that, if approved, the Order may not be implemented until the making of the Order has been advertised to allow any persons who so wish a period of six weeks to question the validity of the Order in terms of the Road Traffic Regulation Act 1984.

5.0 IMPLICATIONS

Finance

- 5.1 There are no financial implications arising from this report.

Legal

- 5.2 There are no legal implications arising from this report.

Human Resources

- 5.3 There are no HR implications arising from this report.

Equalities

- 5.4 There are no equalities implications arising from this report.

Repopulation

- 5.5 There are no repopulation implications arising from this report.

6.0 CONSULTATIONS

- 6.1 The proposals have been advertised in the Greenock Telegraph and full details of the proposals have been made available for public inspection during normal office hours at the offices of the Head of Environmental and Commercial Services, the Head of Legal and Property Services and at Central, Port Glasgow, Kilmacolm and Gourrock Libraries. A copy of the draft Order is appended hereto for Members' information. Appendix 1

7.0 LIST OF BACKGROUND PAPERS

- 7.1 None

THE INVERCLYDE COUNCIL
DISABLED PERSONS' PARKING PLACES
(ON-STREET) ORDER NO. 4 2017

TRAFFIC REGULATION ORDER

THE INVERCLYDE COUNCIL
DISABLED PERSONS' PARKING PLACES (ON-STREET)
ORDER NO. 4 2017

The Inverclyde Council in exercise of the powers conferred on them by Section 32(1) of the Road Traffic Regulation Act 1984 ("the Act") and of all other enabling powers and after consultation with the Chief Constable of Police Scotland in accordance with Part III of Schedule 9 to the Act hereby make the following Order.

1. This Order may be cited as "The Inverclyde Council Disabled Persons' Parking Places (On-Street) Order No. 4 2017" and shall come into operation on #####

2. In this Order the following expressions have the meanings hereby assigned to them:-

"Council" means The Inverclyde Council or its successors as Roads Authority;

"disabled person's badge" means:

- (a) a badge issued under Section 21 of the Chronically Sick and Disabled Persons Act 1970 (as amended);
- (b) a badge issued under a provision of the law of Northern Ireland corresponding to that section; or
- (c) a badge issued by any member State other than the United Kingdom for purposes corresponding to the purposes for which badges under that section are issued;

and which has not ceased to be in force;

"disabled person's vehicle" means a vehicle lawfully displaying a disabled person's badge;

"parking attendant" means a person employed in accordance with Section 63A of the Act to carry out the functions therein;

"parking place" means an area of land specified by number and name in Columns 1 and 2 in the Schedule to this Order;

"traffic sign" means a sign prescribed or authorised under Section 64 of the Act; and

"vehicle" unless the context otherwise requires, means a vehicle of any description and includes a machine or implement of any kind drawn or propelled along roads whether or not by mechanical power.

3. The Schedule titled "Disabled Persons' Parking Places (On Street) Order No. 4 2017" forms the Schedule to this Order.

4. Each area of road which is described in the Schedule to this Order and the plans relative to this Order is hereby designated as a parking place.

5. The parking places shall only be used for the leaving of disabled persons' vehicles displaying a valid disabled person's badge.

6. The limits of each parking place shall be indicated on the carriageway as prescribed by The Traffic Signs Regulations and General Directions 2016.
7. Every vehicle left in any parking place shall stand such that no parking place is occupied by more than one vehicle and that every part of the vehicle is within the limits of the parking place provided that, where the length of a vehicle precludes compliance with this paragraph, such vehicle shall be deemed to be within the limits of a parking place if:-
 - the extreme front portion or, as the case may be, the extreme rear portion of the vehicle is within 300mm of an indication on the carriageway provided under this Order in relation to the parking place; and
 - the vehicle, or any part thereof, is not within the limits of any adjoining parking place.
8. Any person duly authorised by the Council or a police officer in uniform or a traffic warden or parking attendant may move or cause to be moved in case of any emergency, to any place they think fit, vehicles left in a parking place.
9. Any person duly authorised by the Council may suspend the use of a parking place or any part thereof whenever such suspension is considered reasonably necessary:-
 - for the purpose of facilitating the movement of traffic or promoting its safety;
 - for the purpose of any building operation, demolition, or excavation in or adjacent to the parking place or the laying, erection, alteration, removal or repair in or adjacent to the parking place of any sewer or of any main, pipe, apparatus for the supply of gas, water electricity or of any telecommunications apparatus, traffic sign or parking meter;
 - for the convenience of occupiers of premises adjacent to the parking place on any occasion of the removal of furniture from one office or dwellinghouse to another or the removal of furniture from such premises to a depository or to such premises from a depository;
 - on any occasion on which it is likely by reason of some special attraction that any street will be thronged or obstructed; or
 - for the convenience of occupiers of premises adjacent to the parking place at times of weddings or funerals or on other special occasions.
10. A police officer in uniform may suspend for not longer than twenty four hours the use of a parking place or part thereof whenever such suspension is considered reasonably necessary for the purpose of facilitating the movement of traffic or promoting its safety.

Sealed with the Common Seal of The Inverclyde Council and subscribed for them and on their behalf by #####, Proper Officer, on the ##### day of #####, Two Thousand and Eighteen.

THE INVERCLYDE COUNCIL
DISABLED PERSONS' PARKING PLACES
(ON-STREET) ORDER NO. 4 2017

**Statement of Reasons for Proposing to Make
the above Order**

It is considered necessary in order to comply with The Disabled Persons' Parking Places (Scotland) Act 2009, Section 5, to make the above Order to provide assistance for disabled persons who hold a badge under the Disabled Persons (Badges for Motor Vehicles) (Scotland) Regulations 2000 as amended and by revoking those parking places no longer required to maximise street parking capacity.

Willie Rennie
Head of Environmental & Commercial Services
1 Ingleston Park
Cartsburn Street
GREENOCK
PA15 4UE

INVERCLYDE COUNCIL

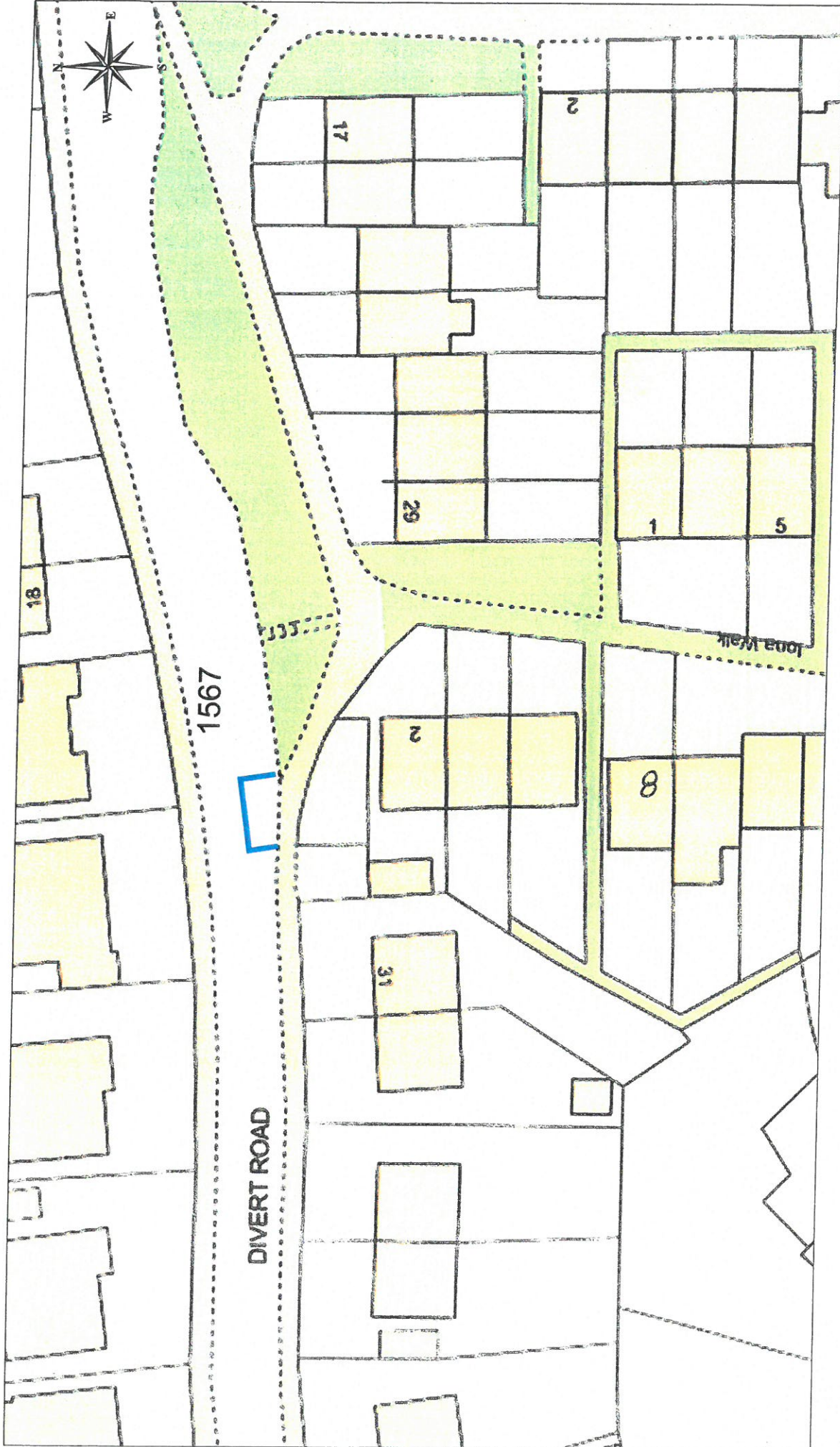
DISABLED PERSONS' PARKING PLACES (ON-STREET)
ORDER No.4 2017

SCHEDULE

Rev A

All and whole that area of ground as described in Column 2 in the table below:

Column 1	Column 2
<u>Ref No.</u>	<u>Address of Disabled Person's Parking Place to be created or revoked @ "ex-adverso"</u>
1567	Divert Road, Gourock
1724	39 South Road, Port Glasgow
1725	55 Cardwell Road, Gourock
1728	22 Victoria Road, Gourock
1730	44 North Road, Port Glasgow
1731	28 Leperstone Avenue, Kilmacolm
1732	59 Albert Road, Gourock
1733	120 Leven Road, Greenock
1736	55 Bawhirley Road, Greenock
1738	6 Shaw Place, Greenock
1739	89 Kilmacolm Road, Greenock
1740	42 Balloch Road, Greenock
1744	2 Levanne Place, Gourock
1745	28 Pembroke Road, Greenock
1746	2 Prospecthill View, Greenock
1747	14 Gordon Street, Greenock
1748	4 Alderbrae Road, Port Glasgow
1266	Glenbrae Road, Port Glasgow

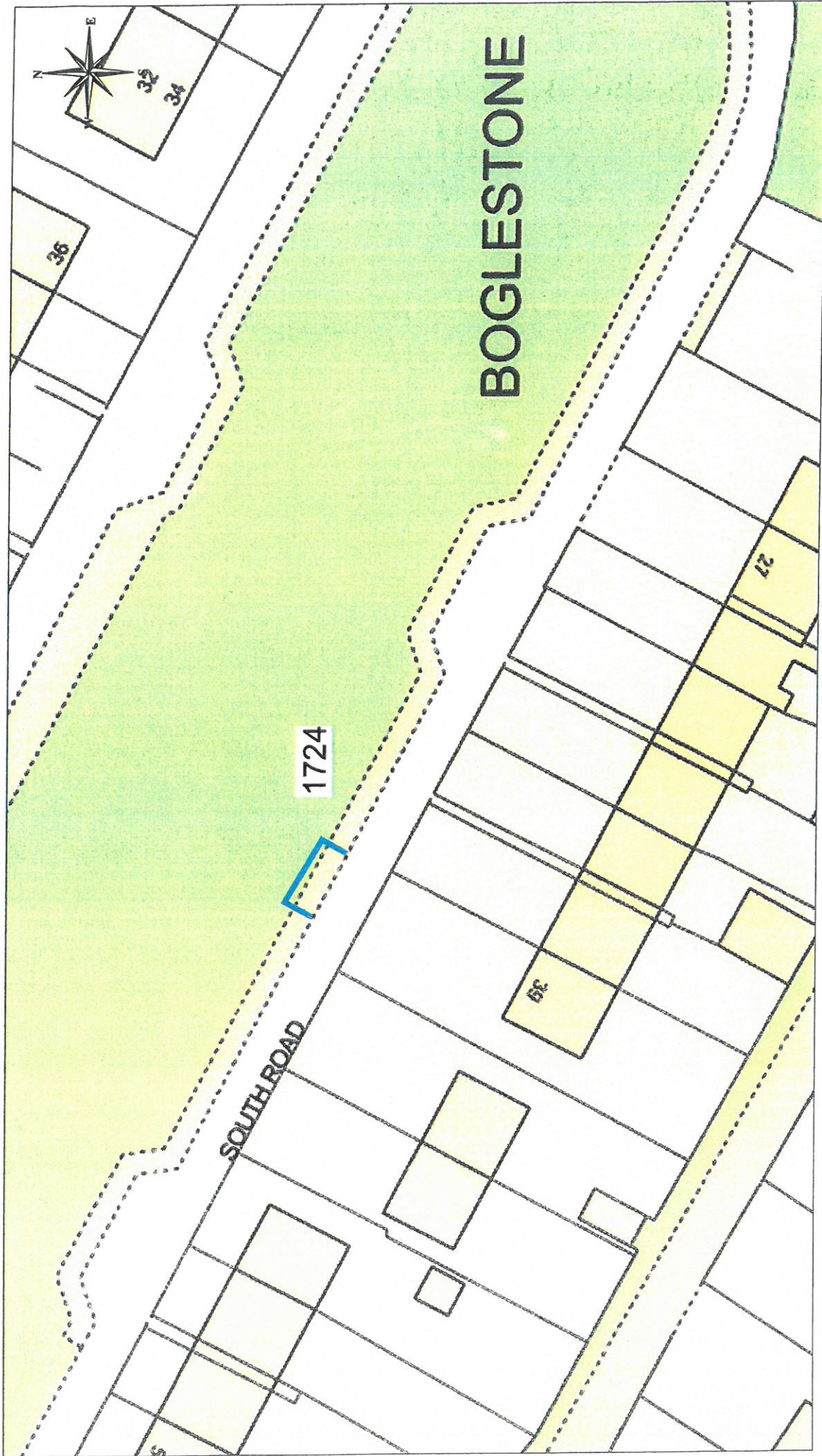


This material has been reproduced from the Ordnance Survey map data with the permission of Ordnance Survey, Her Majesty's Stationary Office.
© Crown copyright.

DISABLED PERSONS' PARKING PLACE
 DIVERT ROAD, GREENOCK
 PLACE No. 1567

Inverclyde
 council
Environmental Services

Regeneration & Environment
 Corporate Director: Aubrey Fawcett
 Municipal Buildings
 Clyde Square
 Greenock
 PA15 1LY
 Tel: 01475 712712
 Fax: 01475 712731
 aubrey.fawcett@inverclyde.nv.uk

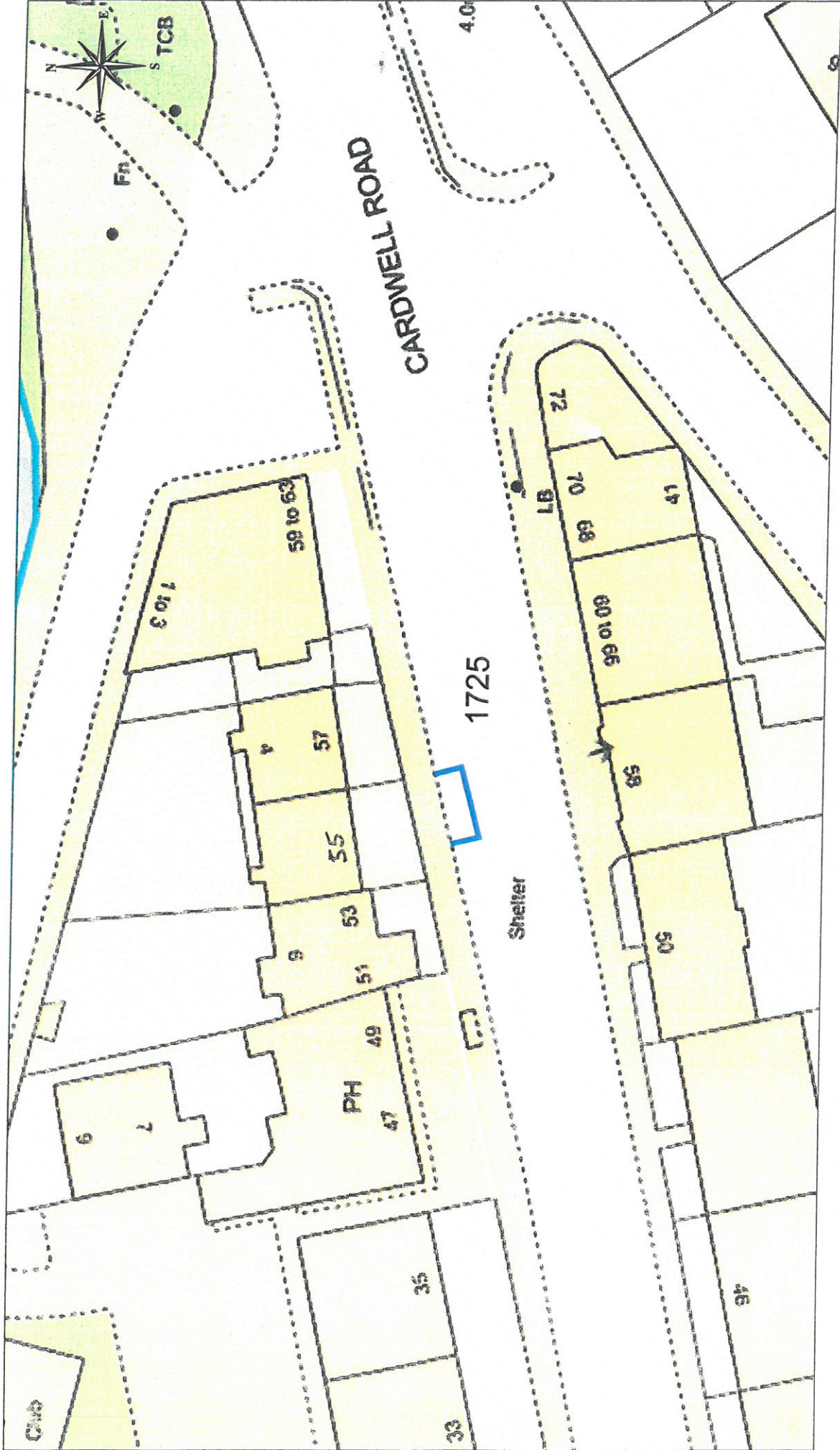


This material has been reproduced from the Ordnance Survey database with the permission of the Controller of Her Majesty's Stationery Office. © Crown Copyright.

DISABLED PERSONS' PARKING PLACE
 39 SOUTH ROAD, PORT GLASGOW
 PLACE No. 1724

Inverclyde council
 Environmental Services

Regeneration & Environment
 Corporate Director: Aubrey Fawcett
 Municipal Buildings
 Clyde Square
 Greenock
 PA15 1LY
 Tel: 01475 712712
 Fax: 01475 712731
 aubr@inverclyde.nv.uk

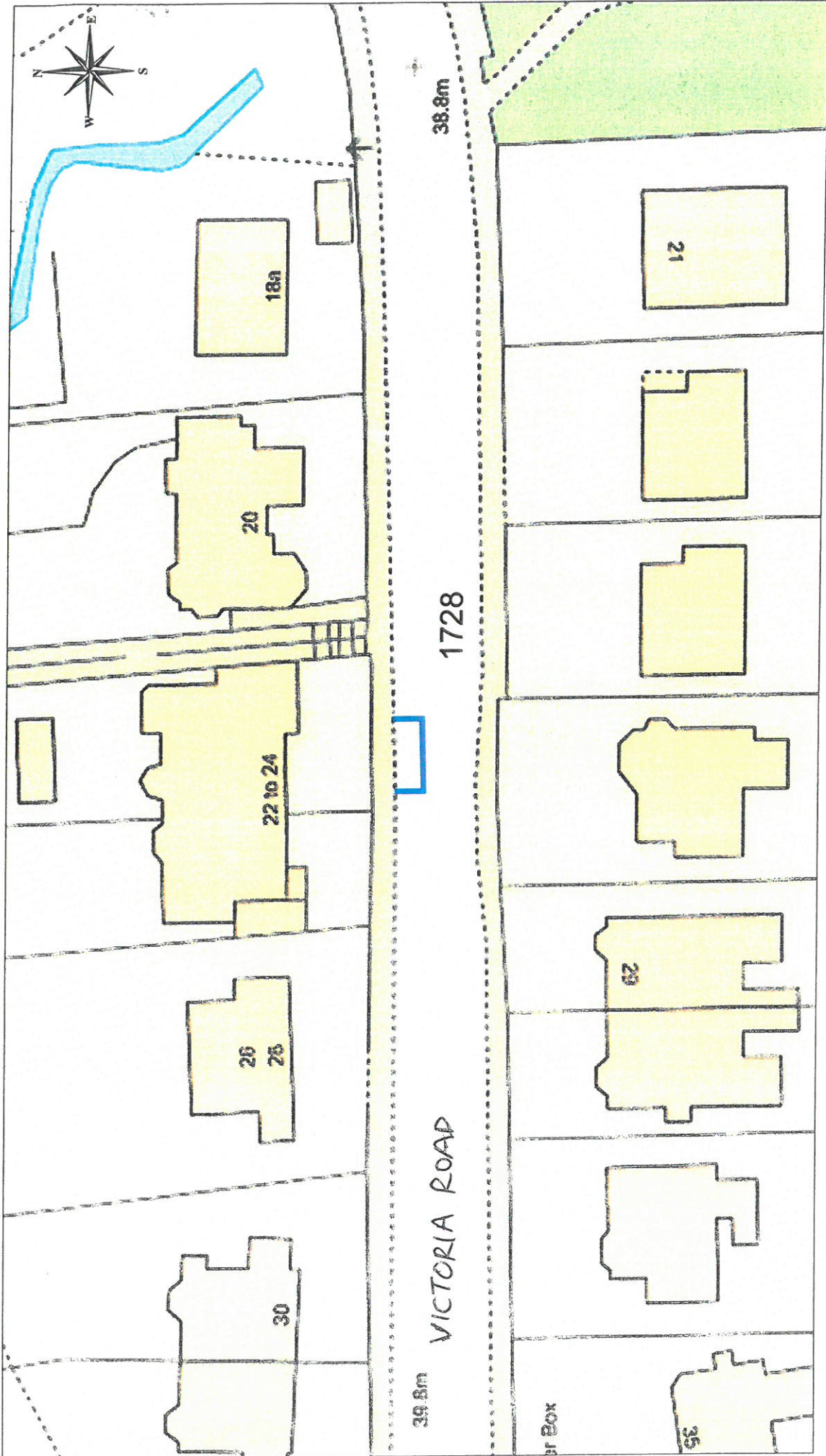


This material has been reproduced from Ordnance Survey data with the permission of the Controller, Her Majesty's Stationery Office. © Crown Copyright.

DISABLED PERSONS' PARKING PLACE
55 CARDWELL ROAD, GOUROCK
PLACE No. 1725

Inverclyde council
Environmental Services

Regeneration & Environment
 Corporate Director: Aubrey Fawcett
 Municipal Buildings
 Clyde Square
 Greenock
 PA15 1LY
 Tel: 01475 712712
 Fax: 01475 712731
 Address: @environment.inverclyde.nyu.uk



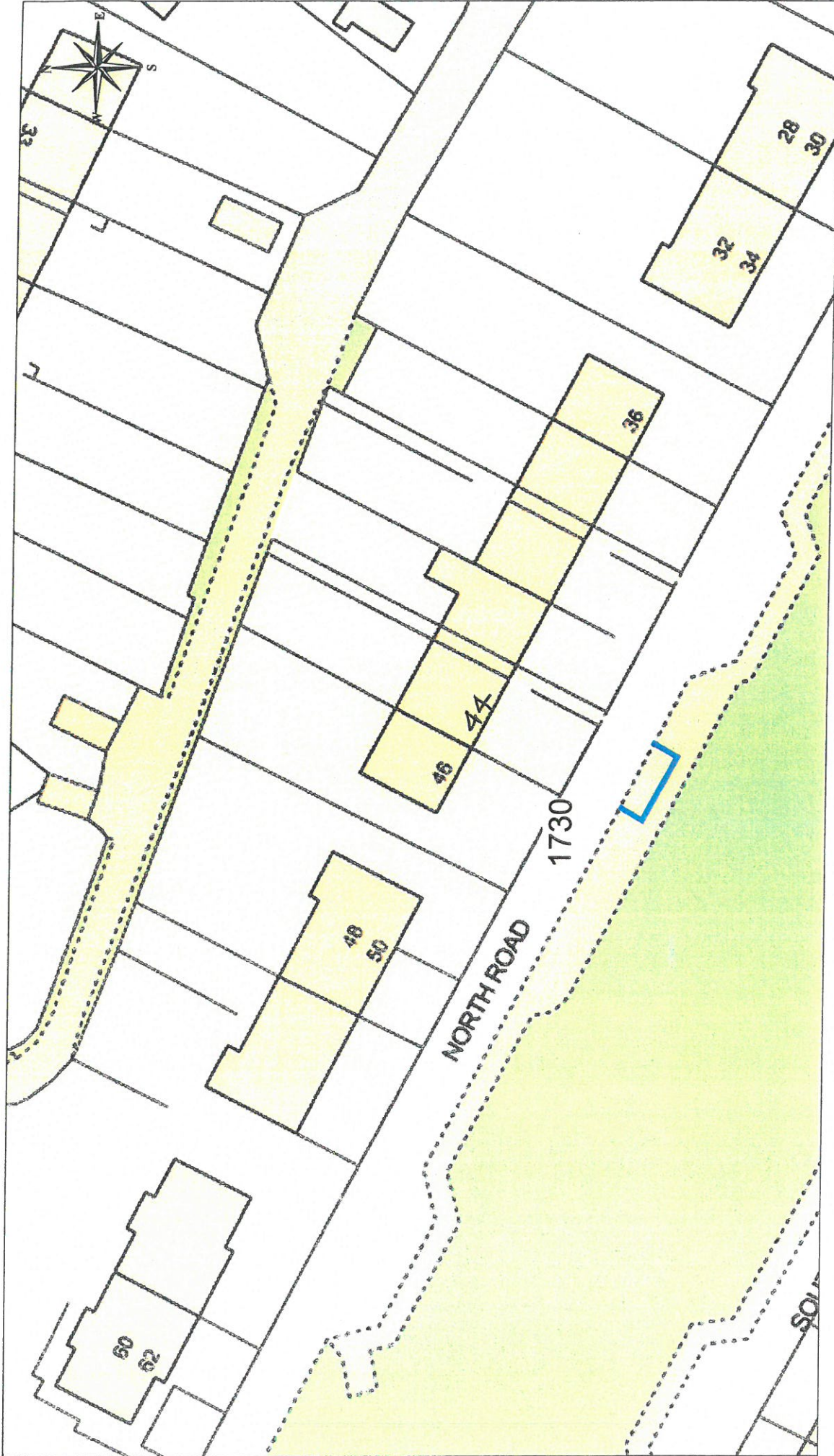
Inverclyde
council
Environmental Services

Regeneration & Environment
Corporate Director: Aubrey Fawcett
Municipal Buildings
Clyde Square
Greenock
PA15 1LY
Tel: 01475 712712
Fax: 01475 712731
aubrey.fawcett@inverclyde.nv.gov.uk

DISABLED PERSONS' PARKING PLACE
22 VICTORIA ROAD, GOUROCK
PLACE No. 1728



This material has been reproduced from
Ordnance Survey digital data with
the permission of the Controller of
Her Majesty's Stationery Office.
© Crown Copyright

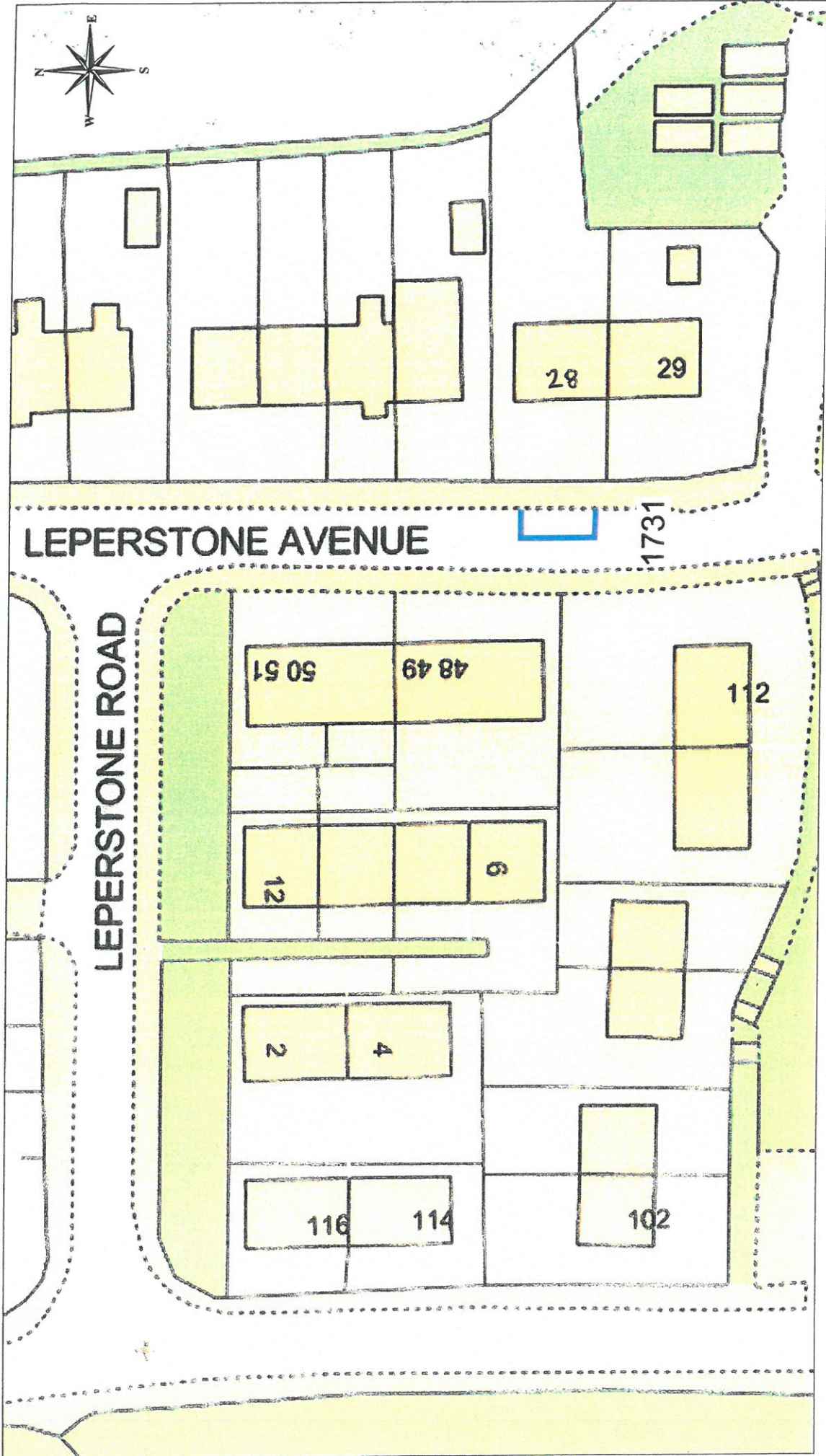


This material has been reproduced from Ordnance Survey digital map data with the permission of the Controller of Her Majesty's Stationery Office.
© Crown copyright.

DISABLED PERSONS' PARKING PLACE
44 NORTH ROAD, PORT GLASGOW
PLACE No. 1730

Inverclyde council
Environmental Services

Regeneration & Environment
 Corporate Director: Aubrey Fawcett
 Municipal Buildings
 Clyde Square
 Glasgow
 PA15 1LY
 Tel: 01475 712712
 Fax: 01475 712731
 aubrey.fawcett@inverclyde.nrv.uk

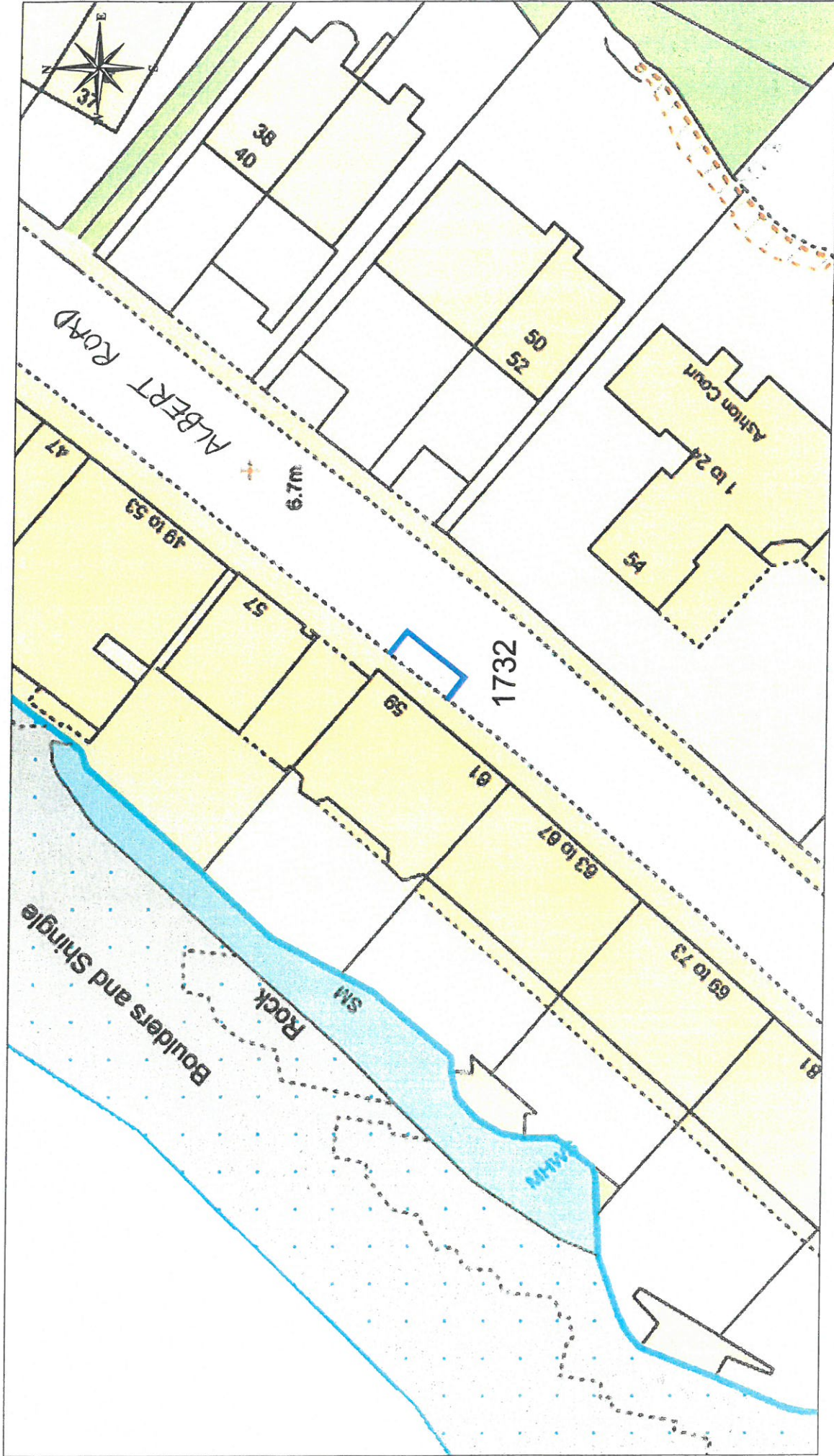


This material has been reproduced from Ordnance Survey data available to the public under licence from the Controller of Her Majesty's Stationery Office. © Crown Copyright.

DISABLED PERSONS' PARKING PLACE
 28 LEPERSTONE AVENUE, KILMACOLM
 PLACE No. 1731

Inverclyde
 council
Environmental Services

Regeneration & Environment
 Corporate Director: Aubrey Fawcett
 Municipal Buildings
 Clyde Square
 Greenock
 PA15 1LY
 Tel: 01475 712712
 Fax: 01475 712731
 aubrey.fawcett@inverclyde.nv.uk

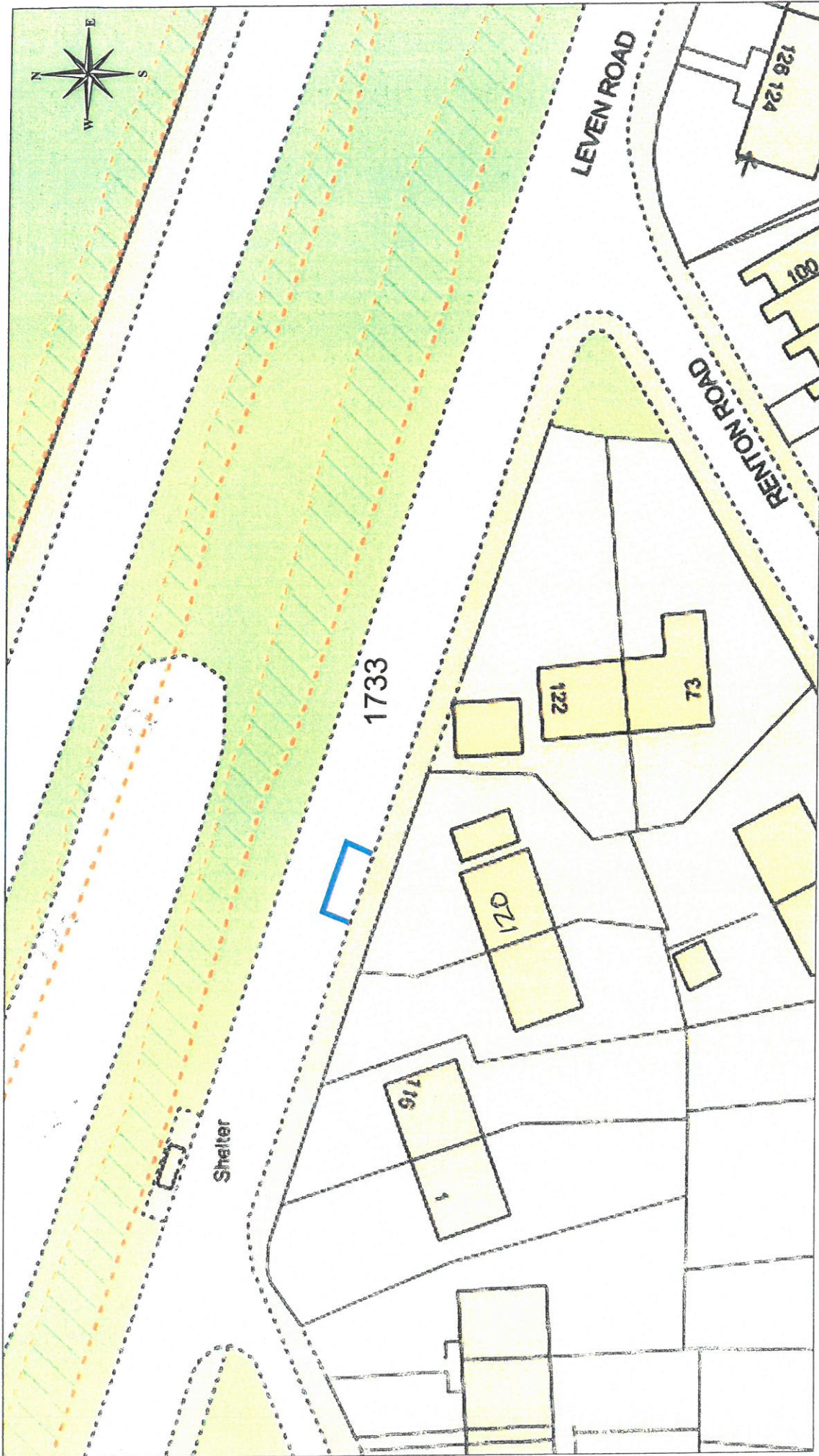


This material has been reproduced from the Ordnance Survey digital map data with the permission of the Ordnance Survey of Her Majesty's Stationery Office. © Crown copyright.

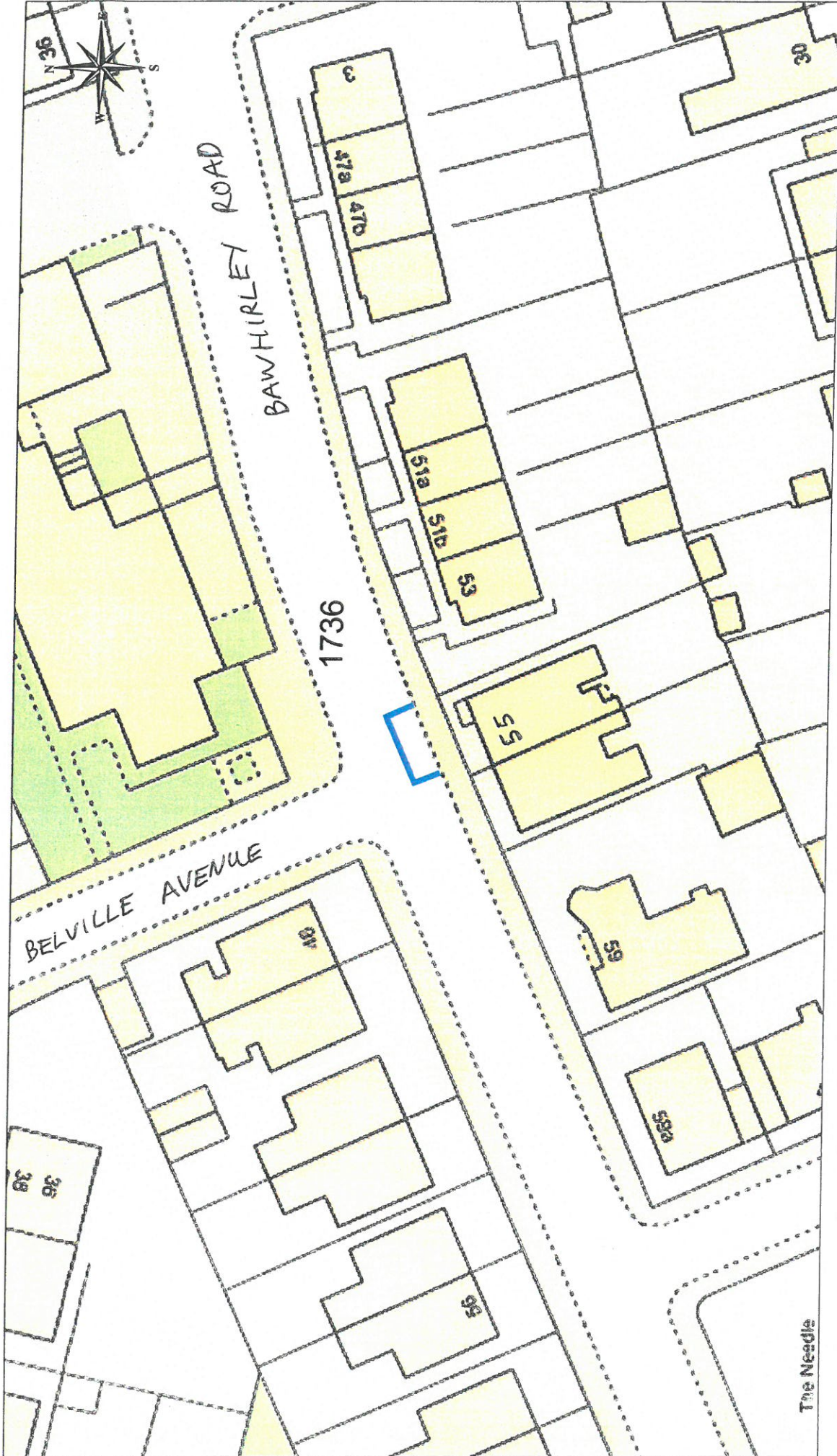
DISABLED PERSONS' PARKING PLACE
 59 ALBERT ROAD, GOUROCK
 PLACE No. 1732

Inverclyde
 council
Environmental Services

Regeneration & Environment
 Corporate Director: Aubrey Fawcett
 Municipal Buildings
 Clyde Square
 Greenock
 PA15 1LY
 Tel: 01475 712712
 Fax: 01475 712731



DISABLED PERSONS' PARKING PLACE
120 LEVEN ROAD, GREENOCK
PLACE No. 1733



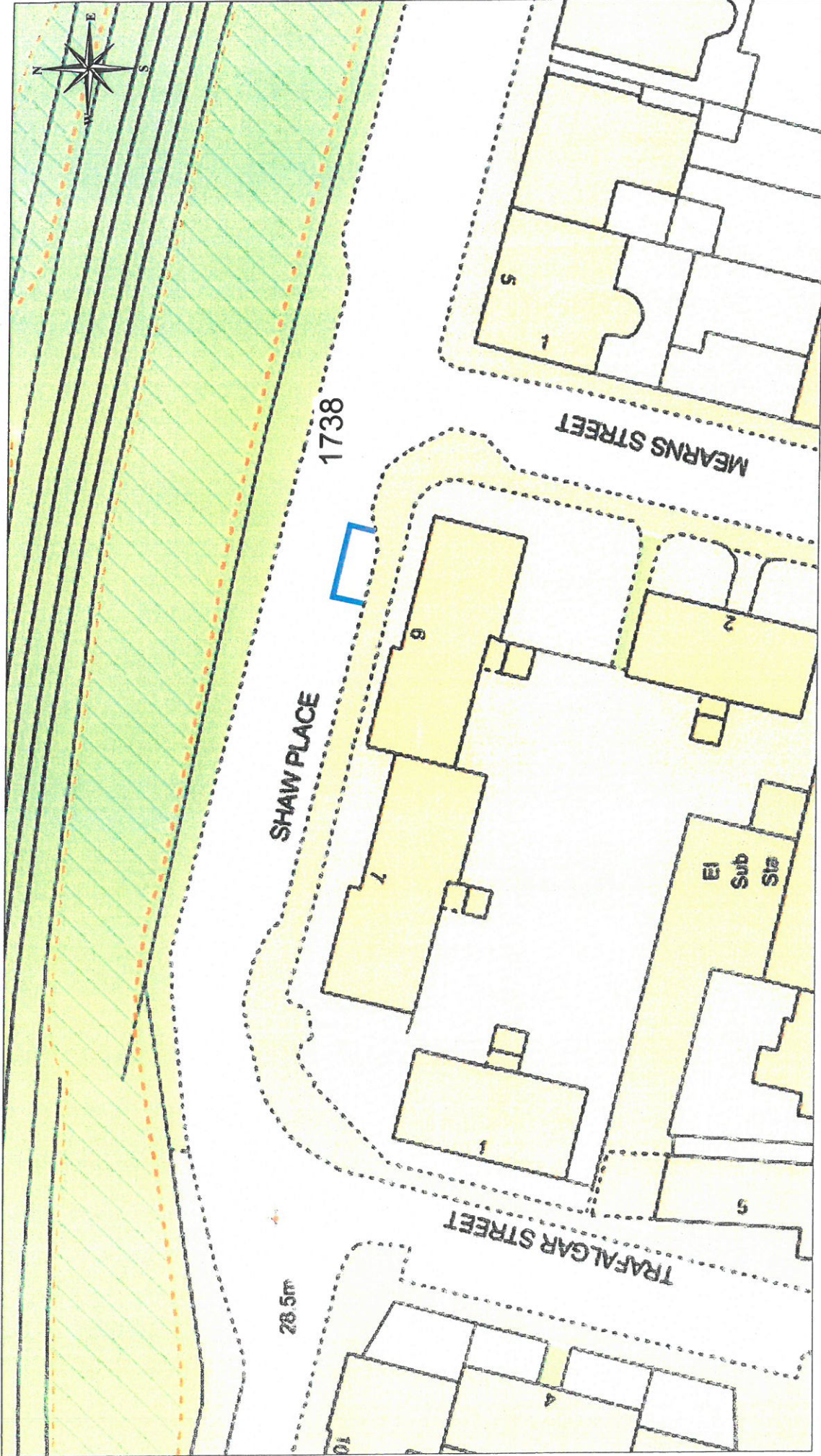

 Ordnance Survey
 Licensed System Supplier
This material has been reproduced from Ordnance Survey digital map data with the permission of Ordnance Survey in collaboration with Her Majesty's Stationery Office. © Crown copyright.

DISABLED PERSONS' PARKING PLACE
 55 BAWHIRLEY ROAD, GREENOCK
 PLACE No. 1736

The Needle

Inverclyde
 council
Environmental Services

Regeneration & Environment
 Corporate Director: Aubrey Fawcett
 Municipal Buildings
 Clyde Square
 Greenock
 PA15 1LY
 Tel: 01475 712712
 Fax: 01475 712731

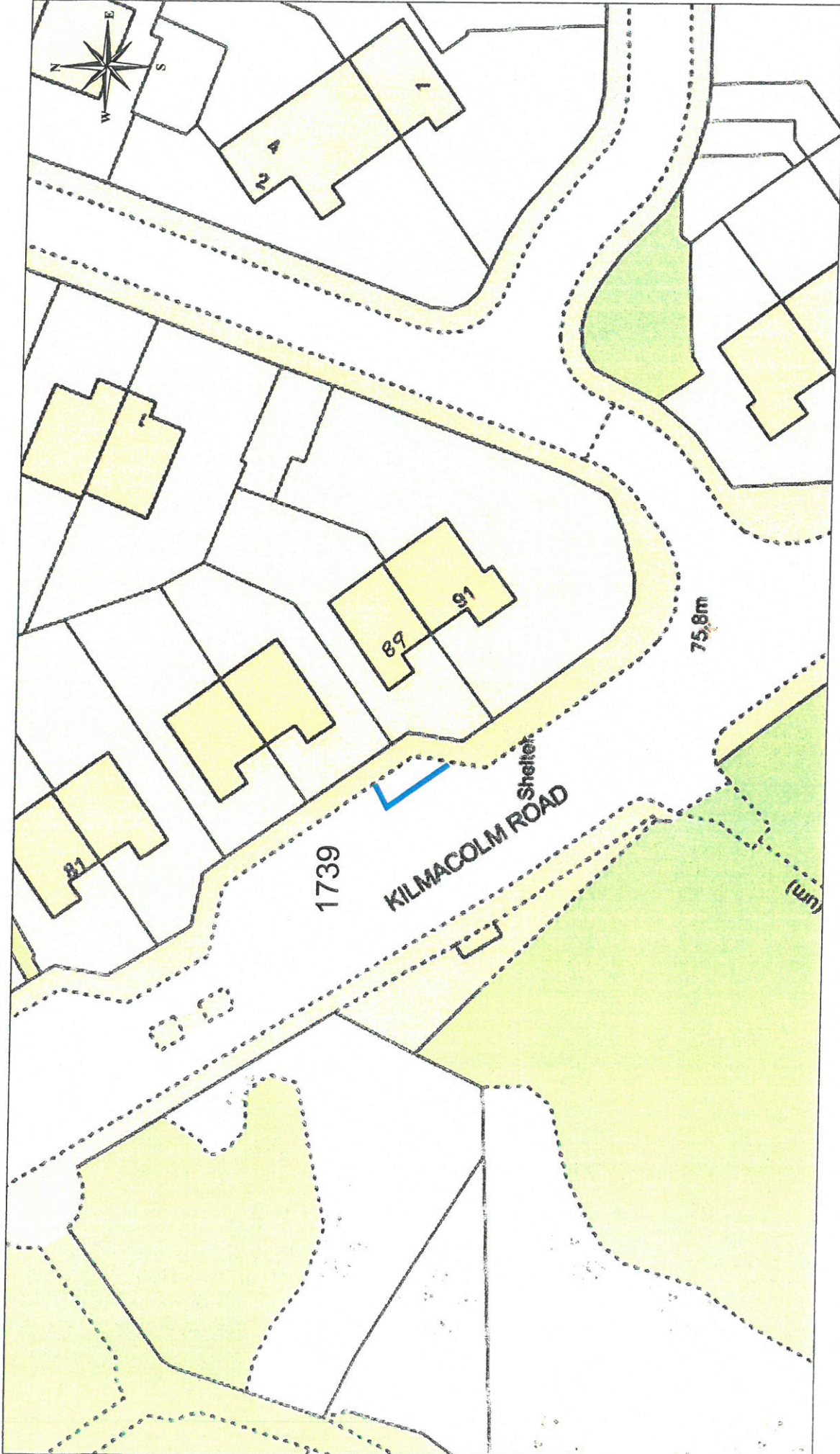


This material has been reproduced from Ordnance Survey digital map data with the permission of the Controller of Her Majesty's Stationery Office. © Crown copyright.

DISABLED PERSONS' PARKING PLACE
 6 SHAW PLACE, GREENOCK
 PLACE No. 1738

Inverclyde council
Environmental Services

Regeneration & Environment
 Corporate Director: Aubrey Fawcett
 Municipal Buildings
 Clyde Square
 Greenock
 PA15 1LY
 Tel: 01475 712712
 Fax: 01475 712731
 aubrey.fawcett@inverclyde.nv.uk

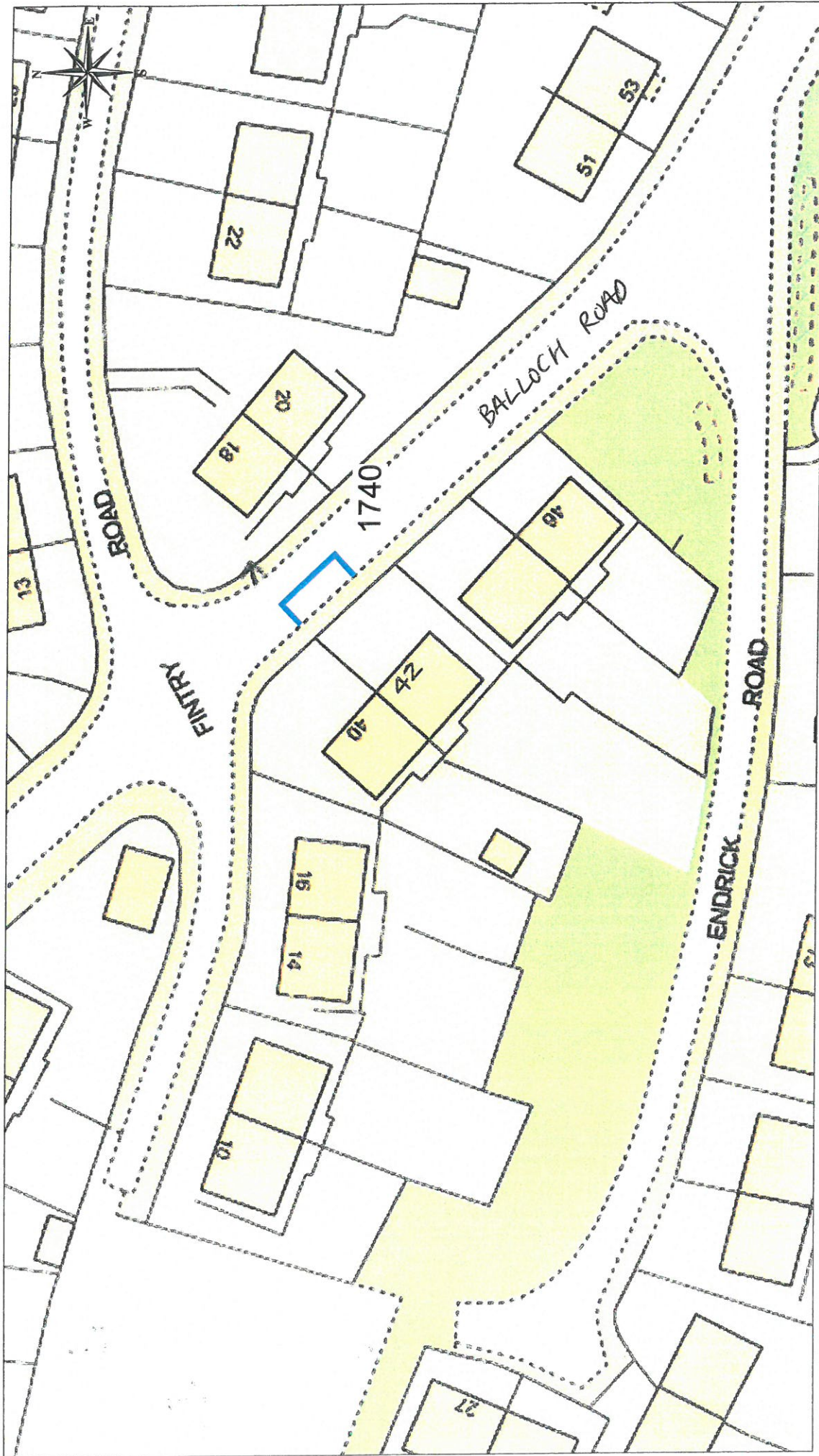


This work has been reproduced from Ordnance Survey data with the permission of the Controller of Her Majesty's Stationery Office. © Crown Copyright

DISABLED PERSONS' PARKING PLACE
 89 KILMACOLM ROAD, GREENOCK
 PLACE No. 1739

Inverclyde
 council
Environmental Services

Regeneration & Environment
 Corporate Director: Aubrey Fawcett
 Municipal Buildings
 Clyde Square
 Greenock
 PA15 1LY
 Tel: 01475 712712
 Fax: 01475 712731
 aubrey.fawcett@inverclyde.nsw.nhs.uk

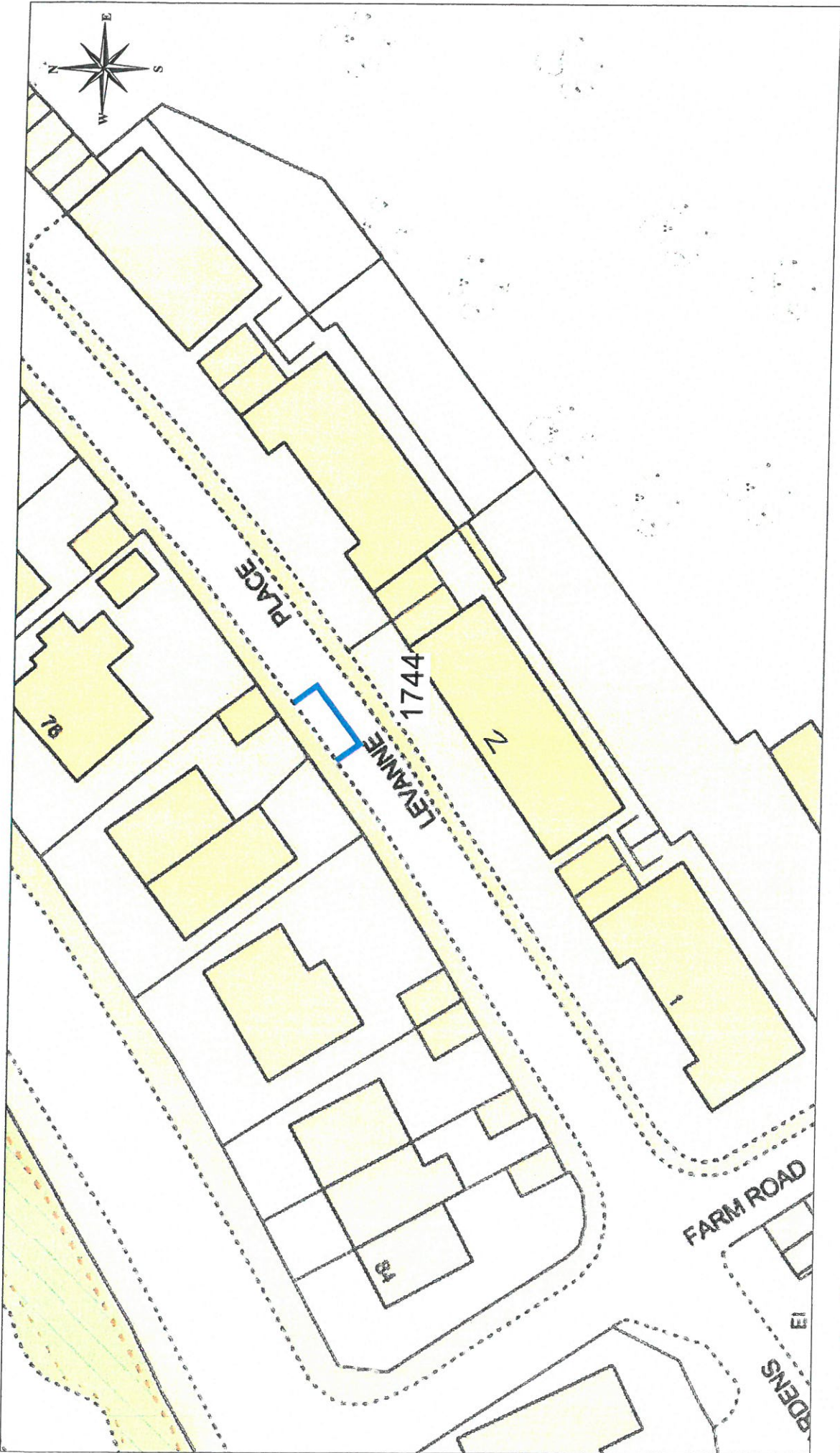


This material has been extracted from Ordnance Survey digital map data with the permission of the Controller of Her Majesty's Stationery Office. © Crown Copyright.

DISABLED PERSONS' PARKING PLACE
 42 BALLOCH ROAD, GREENOCK
 PLACE No. 1740

Inverclyde council
Environmental Services

Regeneration & Environment
 Corporate Director: Aubrey Fawcett
 Municipal Buildings
 Clyde Square
 Greenock
 PA15 1LY
 Tel: 01475 712712
 Fax: 01475 712731
 email: a.fawcett@inverclyde.nhs.uk

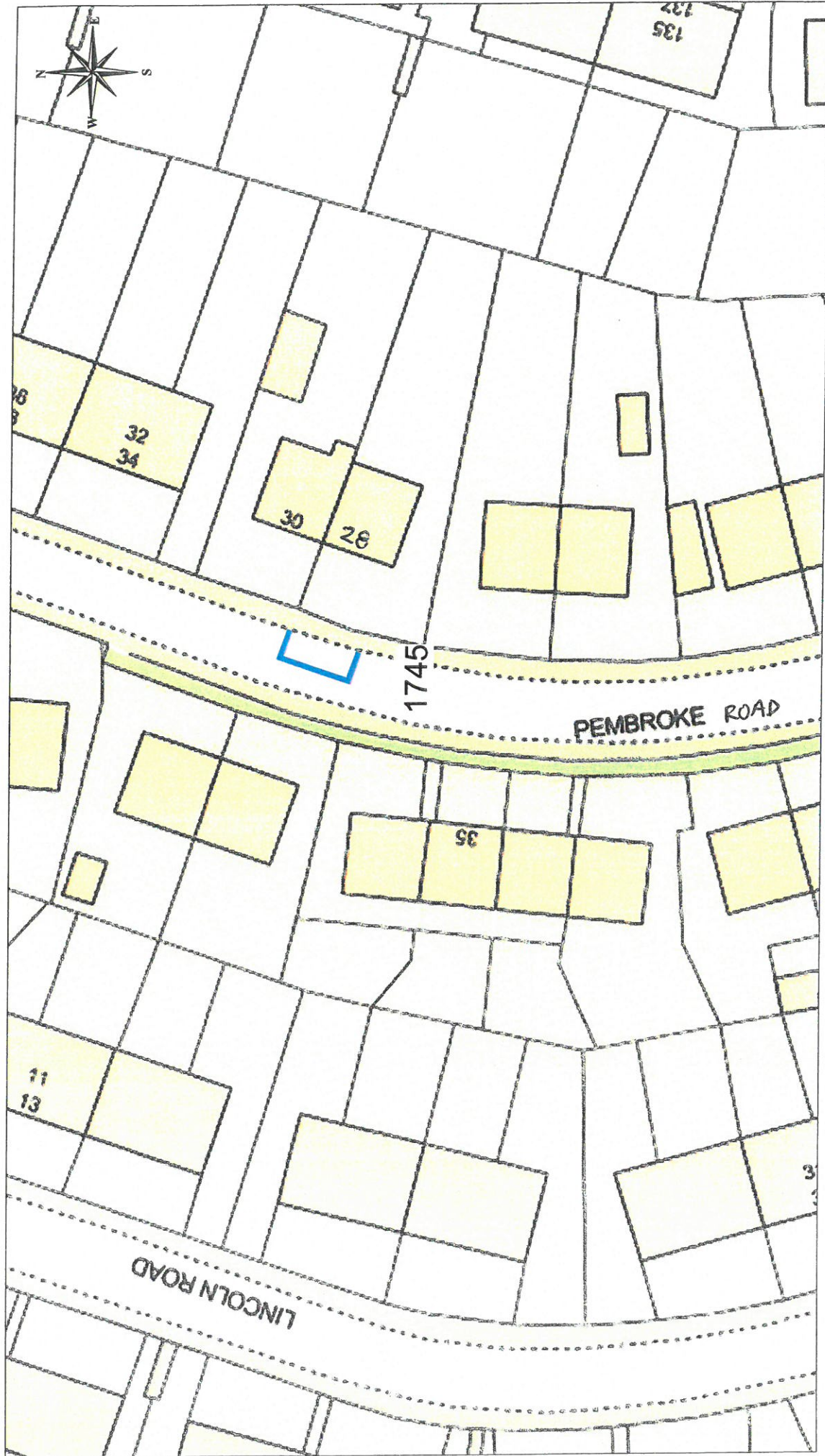



 Ordnance Survey
 Licensed System Supplier
This material has been reproduced from the Ordnance Survey digital map data with the permission of the Controller of Her Majesty's Stationery Office. © Crown copyright.

DISABLED PERSONS' PARKING PLACE
2 LEVANNE PLACE, GOUROCK
PLACE No. 1744

Inverclyde
 council
Environmental Services

Regeneration & Environment
 Corporate Director: Aubrey Fawcett
 Municipal Buildings
 Clyde Square
 Greenock
 PA15 1LY
 Tel: 01475 712712
 Fax: 01475 712731
 aubrey.fawcett@inverclyde.nv.gov.uk

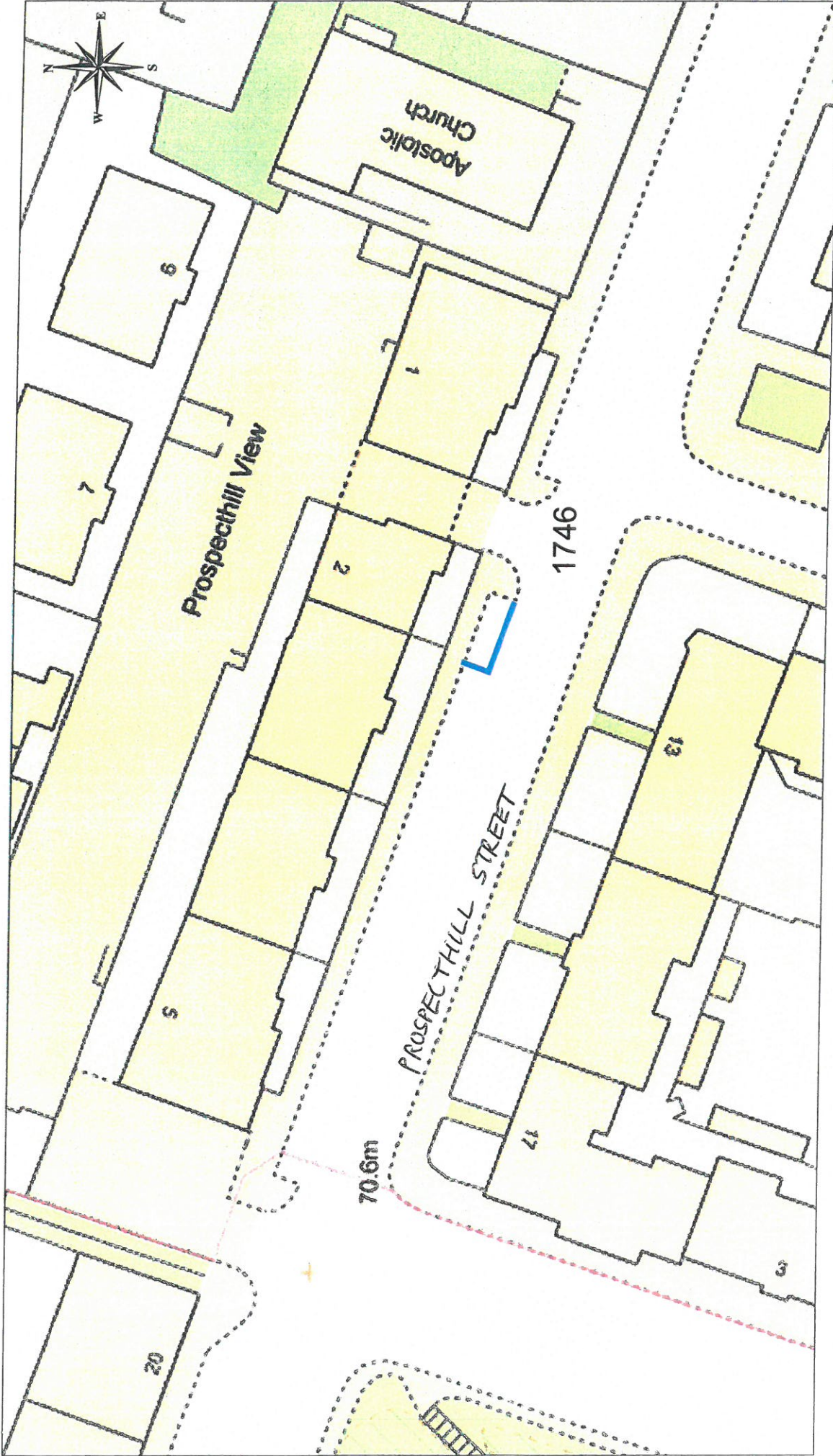


This material has been reproduced from the Ordnance Survey digital map data with the permission of Her Majesty's Stationery Office. © Crown copyright.

DISABLED PERSONS' PARKING PLACE
 28 PEMBROKE ROAD, GREENOCK
 PLACE No. 1745

Inverclyde council
 Environmental Services

Regeneration & Environment
 Corporate Director: Aubrey Fawcett
 Municipal Buildings
 Clyde Square
 Greenock
 PA15 1JY
 Tel: 01475 712713
 Fax: 01475 713731
 Email: faucett@inverclyde.coun.nhs.uk



DISABLED PERSONS' PARKING PLACE
2 PROSPECTHILL VIEW, GREENOCK
PLACE No. 1746



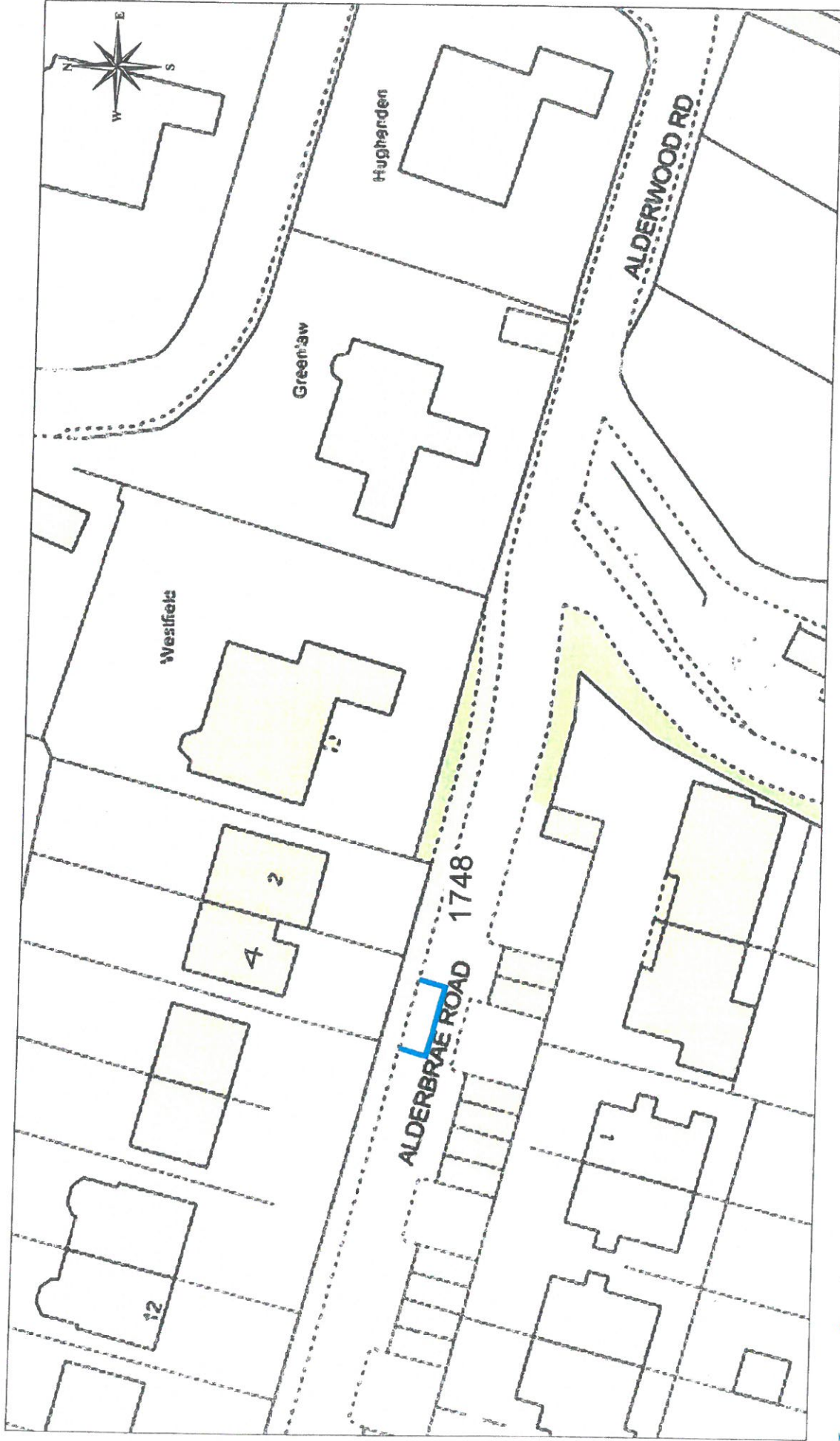
DISABLED PERSONS' PARKING PLACE
 14 GORDON STREET, GREENOCK
 PLACE No. 1747

Inverclyde
 council
Environmental Services

Regeneration & Environment
 Corporate Director: Aubrey Fawcett
 Municipal Buildings
 Clyde Square
 Greenock
 PA15 1LY
 Tel: 01475 712712
 Fax: 01475 712731
 aubrey.fawcett@inverclyde.nv.uk



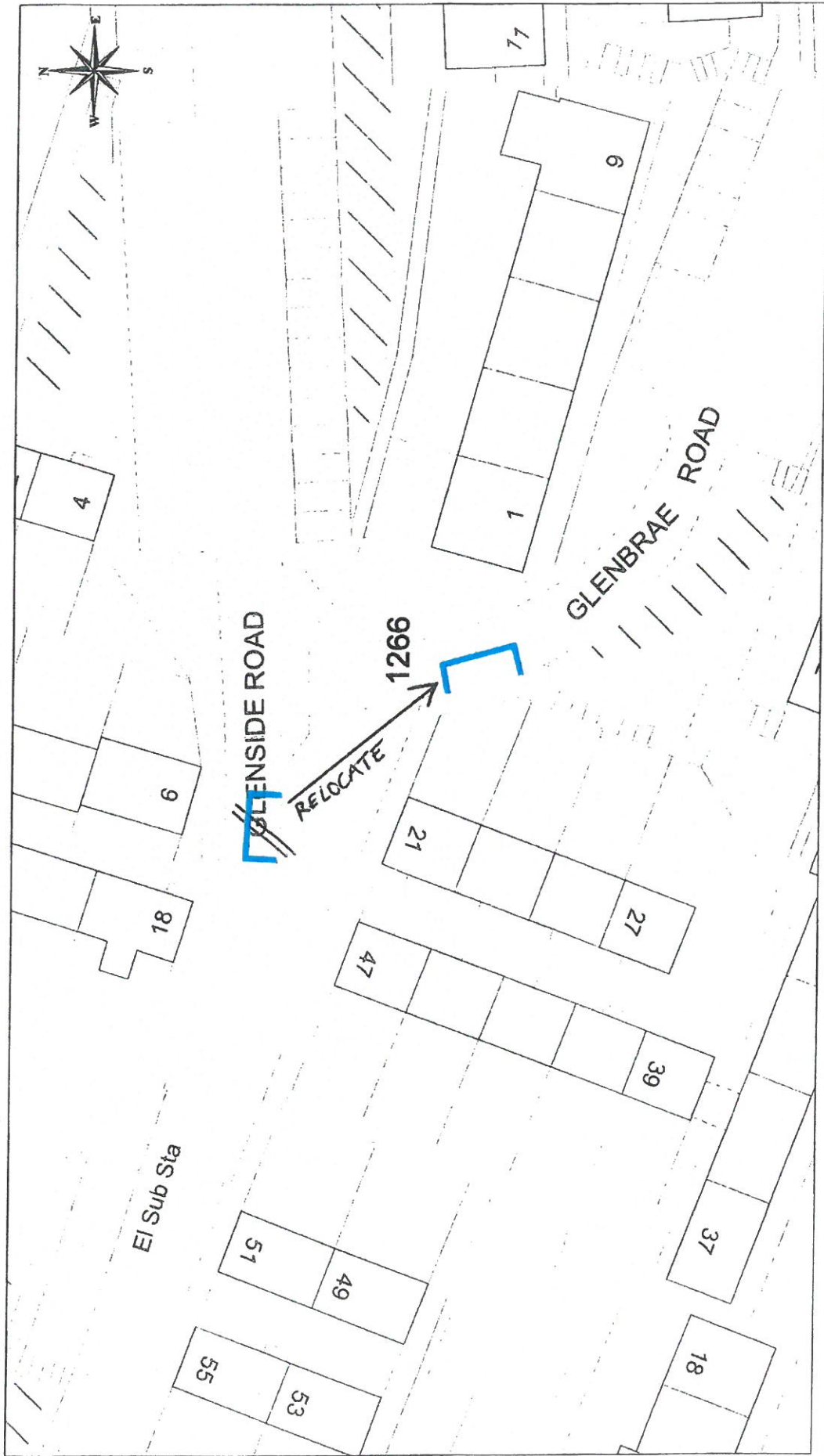
This material has been reproduced from
 Ordnance Survey digital map data with
 the permission of the Controller of
 Her Majesty's Stationery Office.
 © Crown Copyright



Inverclyde
council
Environmental Services

Regeneration & Environment
Corporate Director: Aubrey Fawcett
Municipal Buildings
Clyde Square
Greenock
PA 15 1LY
Tel: 01475 712712

DISABLED PERSONS' PARKING PLACE
4 ALDERBRAE ROAD, PORT GLASGOW
PLACE No. 1748



This drawing has been reproduced from the original drawing held at the Ordnance Survey Office, Edinburgh, Scotland. Licence Number: 100023421

**DISABLED PERSONS' PARKING PLACE
 GLENBROOK ROAD, PORT GLASGOW
 PLACE No. 1266 RELOCATION**



Regeneration & Environment
 Corporate Director: Aubrey Fawcett
 Municipal Buildings
 Clyde Square
 Greenock
 PA15 1LY
 Tel: 01475 712712
 Fax: 01475 712731
 aubrey.fawcett@inverclyde.gov.uk